

Caliche Whitetail

R A N C H





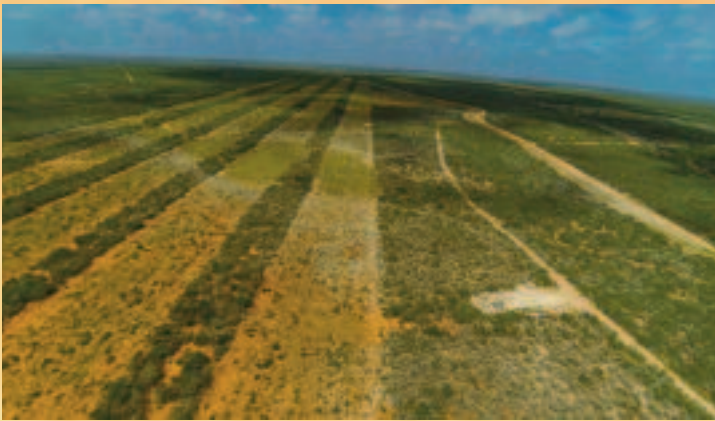


CALICHE WHITETAIL RANCH –
1440 ACRES *Duval County, Freer, TX*

1440 acres of high fenced rolling South Texas terrain. From low creek bottoms to roller chopped hill tops. The ranch is covered with an abundance of native brush, Granjeno, Guajillo, Black Brush, and Bull Mesquite to name a few. Six cultivated food plots help supplement the wildlife. With approximately 29 miles of good roads and three electric gates allowing easy access throughout the ranch. Caliche has been extensively game managed for 15 years producing Trophy Whitetail from 200" to 232" with 24 bucks over 170".

The full appointed hunting lodge sleeps 40 and sits on a stocked tank with a pier extending out to the middle. This ranch comes fully equipped with tools, equipment, hunting vehicles, game and processing equipment, 50% of all minerals owned will convey. This is a turnkey operation, ready to go.





The *duPerier*
TEXAS LAND MAN, LLC™
Trip duPerier
(830) 755-5205