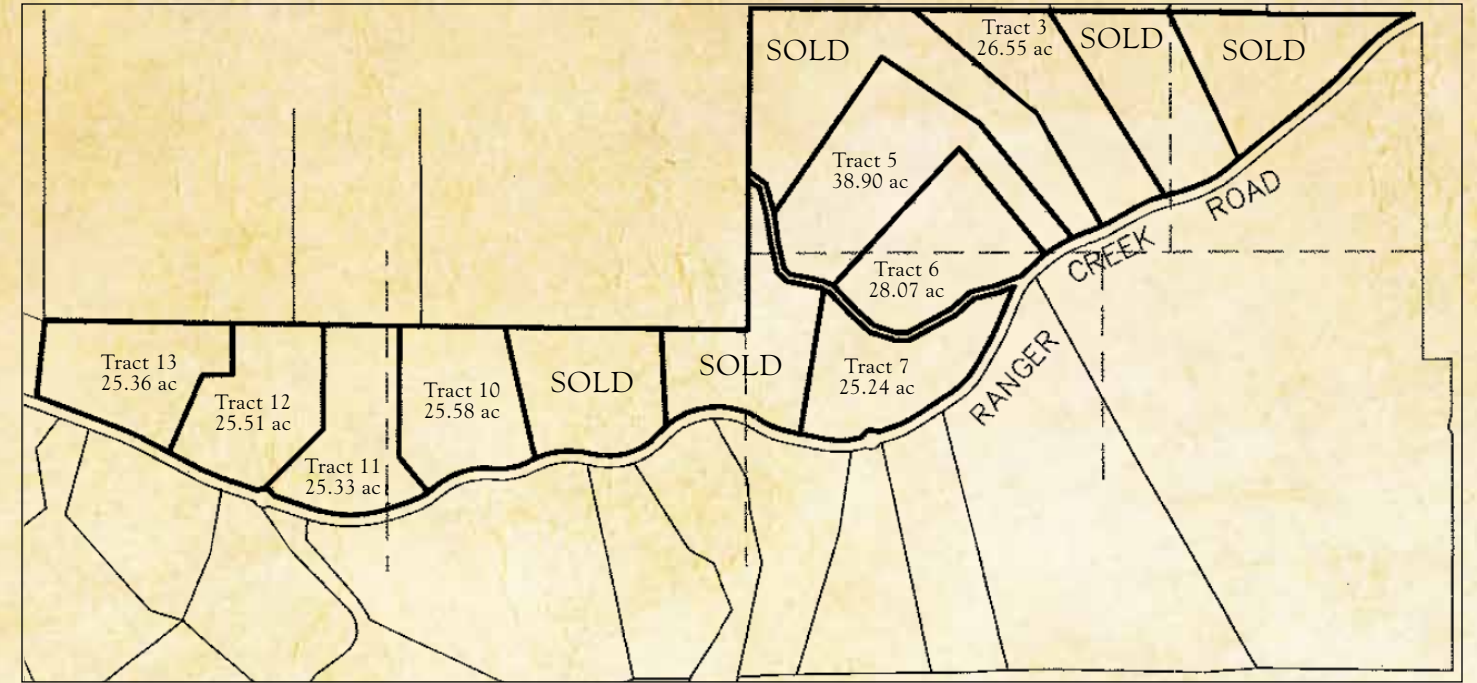
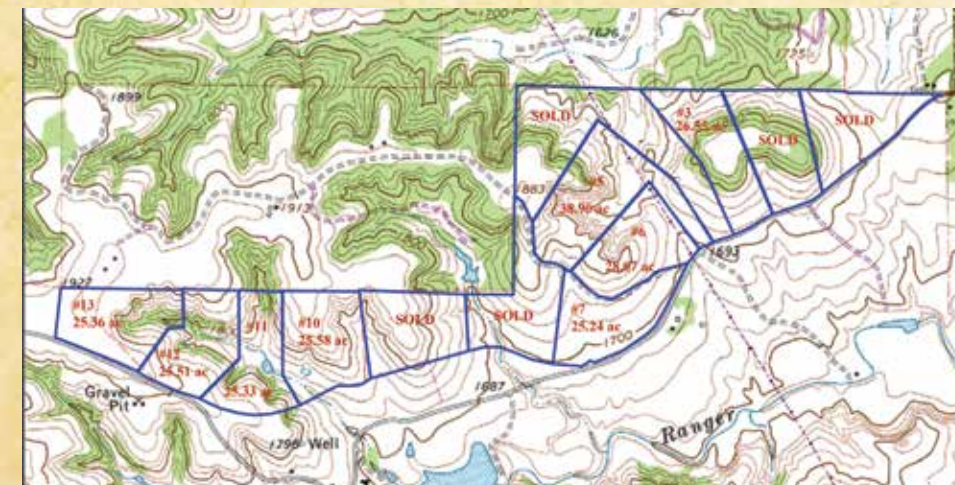


THE HILLS AT RANGER CREEK





THE HILLS AT RANGER CREEK
 25-45 ACRES • KENDALL COUNTY, BOERNE
 This property includes 25 to 45 acre tracts with “top of the world” building sites. Ten minutes from Boerne, 20 minutes from 1604 The Rim and The Shops at La Cantera. Build your custom Hill Country home with Ranger Creek paved road frontage in the Boerne School District. Call for a plat & price and to set up your showing.



- TRACT 1
25.12 ac SOLD
- TRACT 2
25.92 ac SOLD
- TRACT 3
26.55 ac @ \$20,500/ac = \$544,275
- TRACT 4
45.32 ac SOLD
- TRACT 5
38.90 ac @ \$17,500/ac = \$680,750
- TRACT 6
28.07 ac @ \$19,000/ac = \$533,330
- TRACT 7
25.24 ac @ \$19,000/ac = \$479,560
- TRACT 8
26.36 ac SOLD
- TRACT 9
25.33 ac SOLD
- TRACT 10
25.58 ac @ \$19,000/ac = \$486,020
- TRACT 11
25.33 ac @ \$18,500/ac = \$468,605
- TRACT 12
25.51 ac @ \$18,000/ac = \$459,180
- TRACT 13
25.36 ac @ \$17,500/ac = \$443,800