

OLD SCHMIDT PLACE







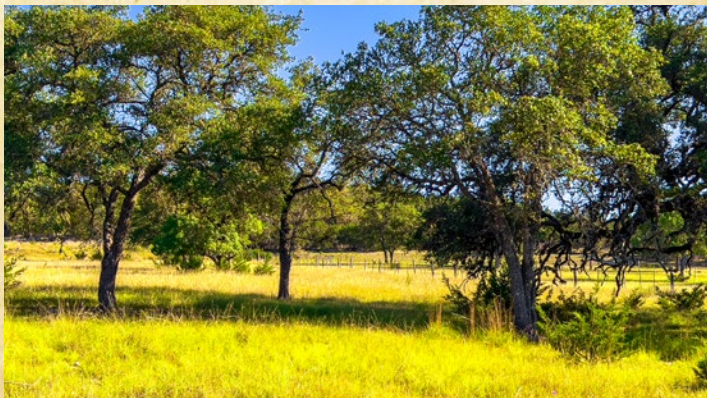
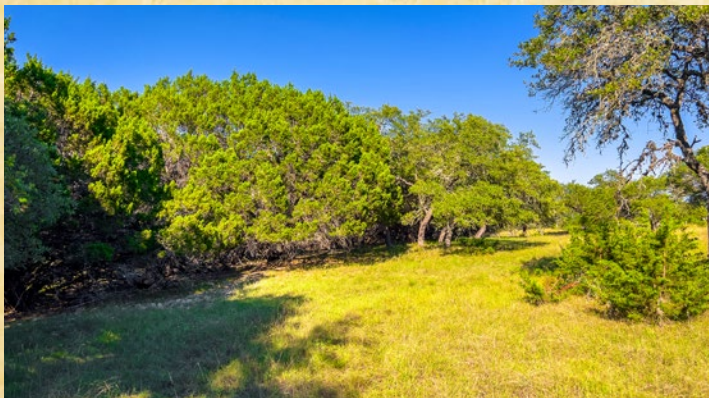
OLD SCHMIDT PLACE

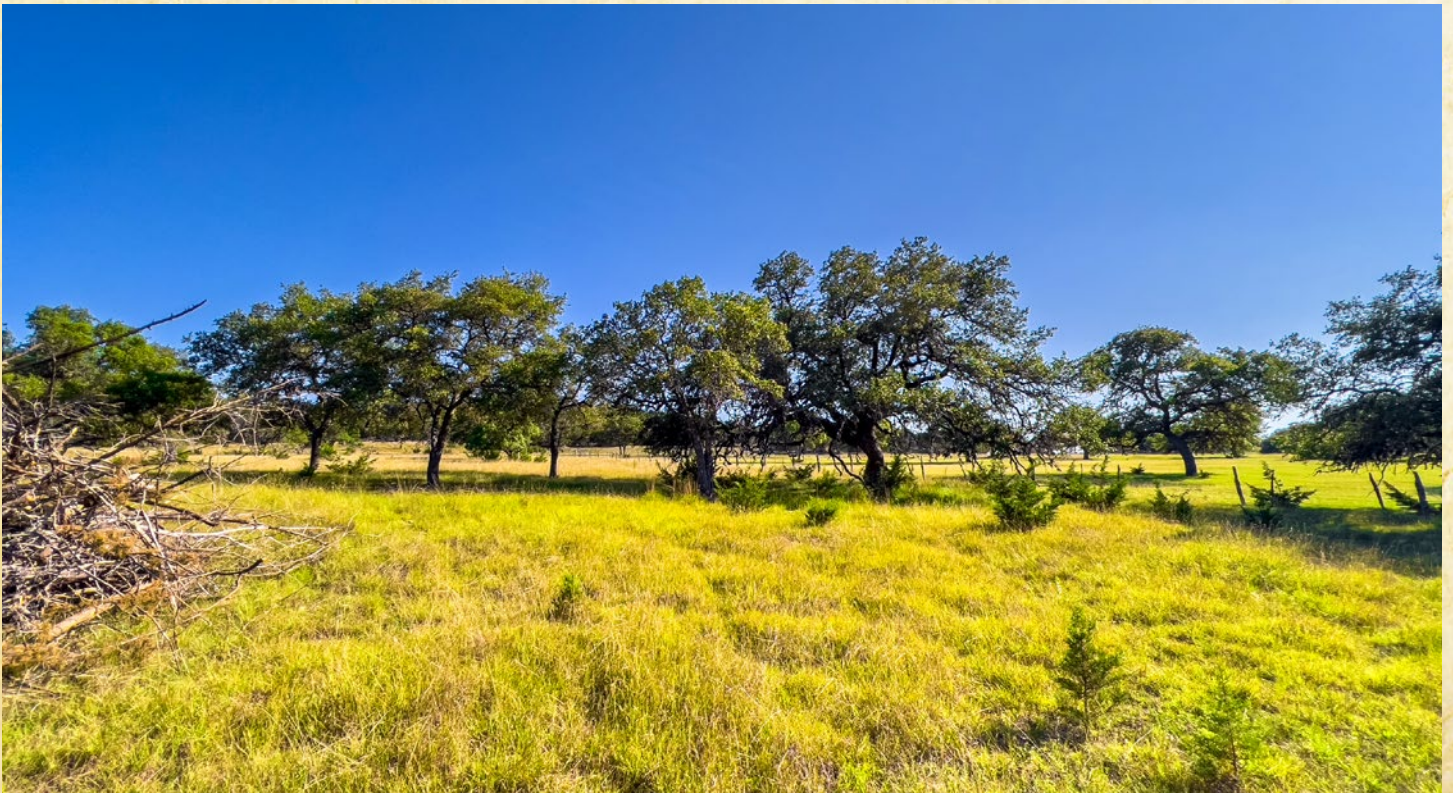
15± ACRES • KENDALL COUNTY • BOERNE, TX

Situated just outside the charming town of Boerne, TX, and a mere 35-minute drive from bustling San Antonio, The Old Schmidt Place welcomes you to experience the serenity of one of the last pieces of this Texas Hill Country's legacy ranch. Spanning 15 acres, this remarkable property offers a blank canvas for you to create your own idyllic homestead amidst the natural splendor of the Texas Hill Country.

The ranch boasts a perfect balance of features, with a spring and wet weather area in the bottom, as well as stunning hilltop views that will leave you in awe. This harmonious blend of usable acreage and elevations ensures a diverse and captivating landscape to explore and enjoy. Nature enthusiasts will be delighted by the abundant wildlife that roams the property, including whitetail deer, axis deer, turkey, and dove, providing ample opportunities for year-round free chase hunting. Not only does The Old Schmidt Place offer a picturesque setting, but it is also located within the highly acclaimed Boerne Independent School District. You can have the best of both worlds—the tranquility of a rural lifestyle and the convenience of modern amenities just moments away. Situated directly off Schmidt Lane in central Kendall County, this ranch provides exceptional privacy while maintaining easy access to nearby attractions and services.

If you're seeking a little more space to create your own haven while staying connected to the essentials of daily life, The Old Schmidt Place is the perfect choice. Embrace the opportunity to carve out your own homestead in this remarkable setting. Contact Texas LandMen today to schedule a visit. Your slice of Hill Country paradise awaits! \$475,000





Website
Click or Scan



TexasLandMen.com • 830-755-5205 • F: 830-755-5420