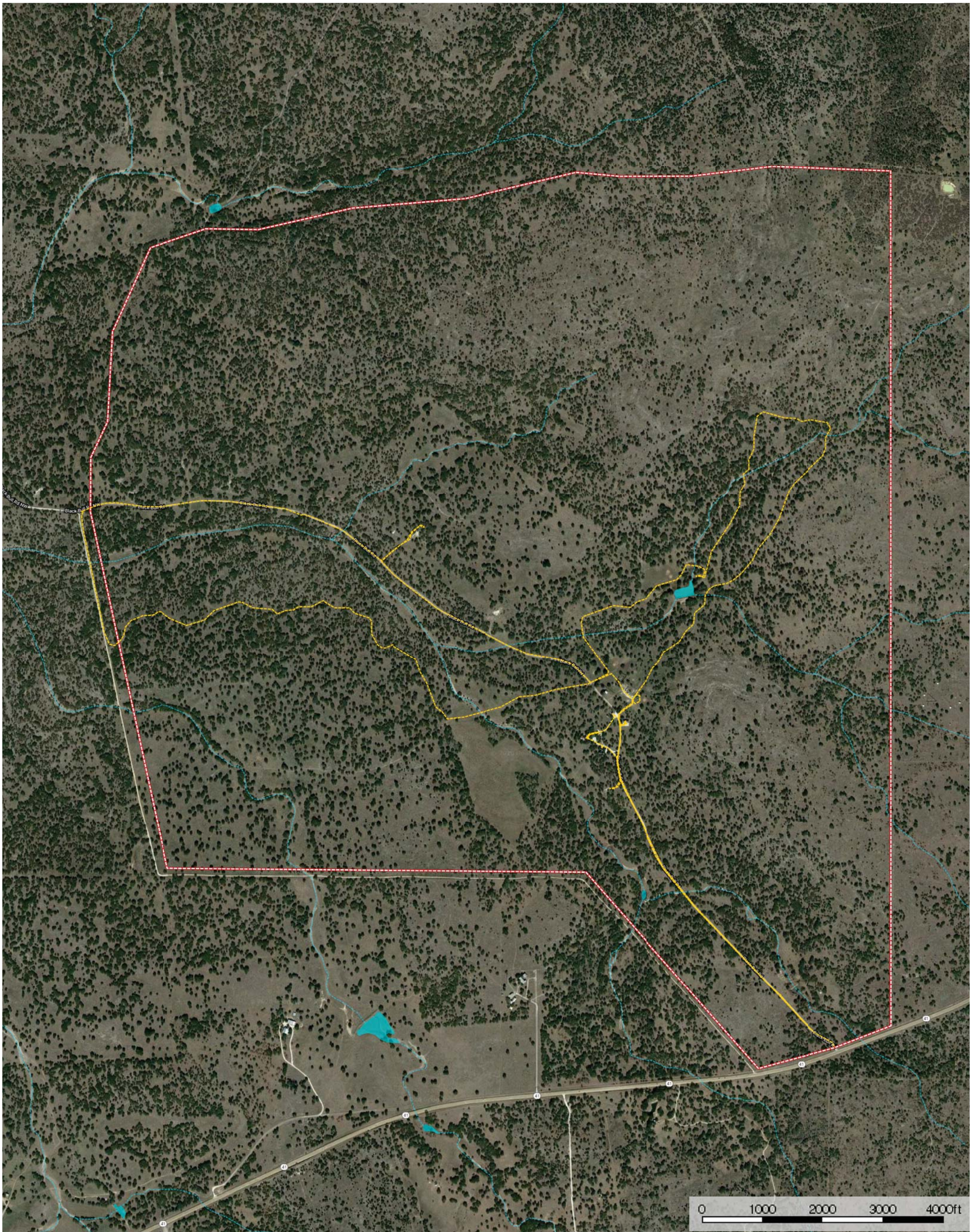
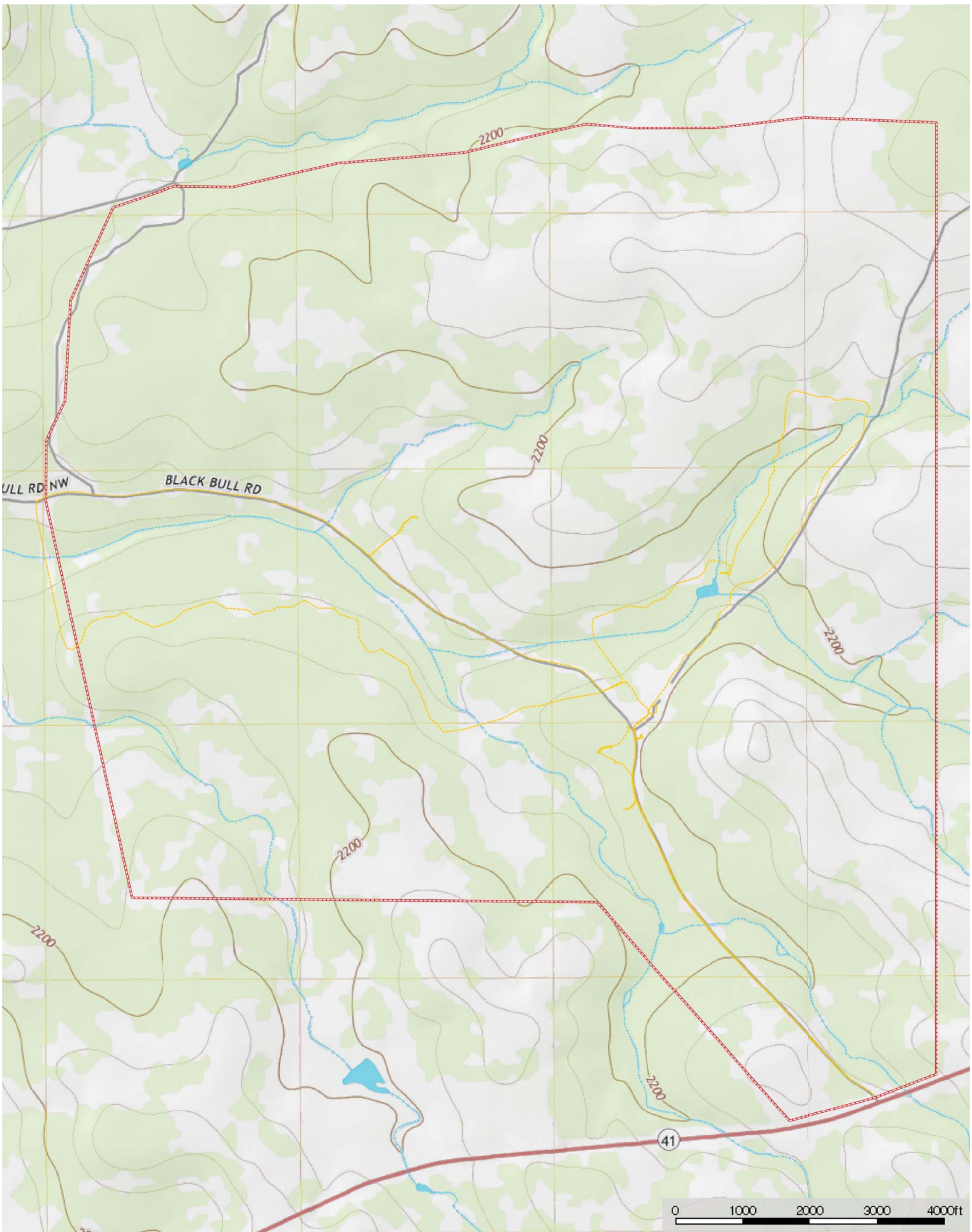


2,708 Kerr County Ranch
Kerr County, Texas, 2708 AC +/-



- Track
- Boundary
- Stream, Intermittent
- River/Creek
- Water Body

2,708 Kerr County Ranch
Kerr County, Texas, 2708 AC +/-



- Track
- Boundary
- Stream, Intermittent
- River/Creek
- Water Body